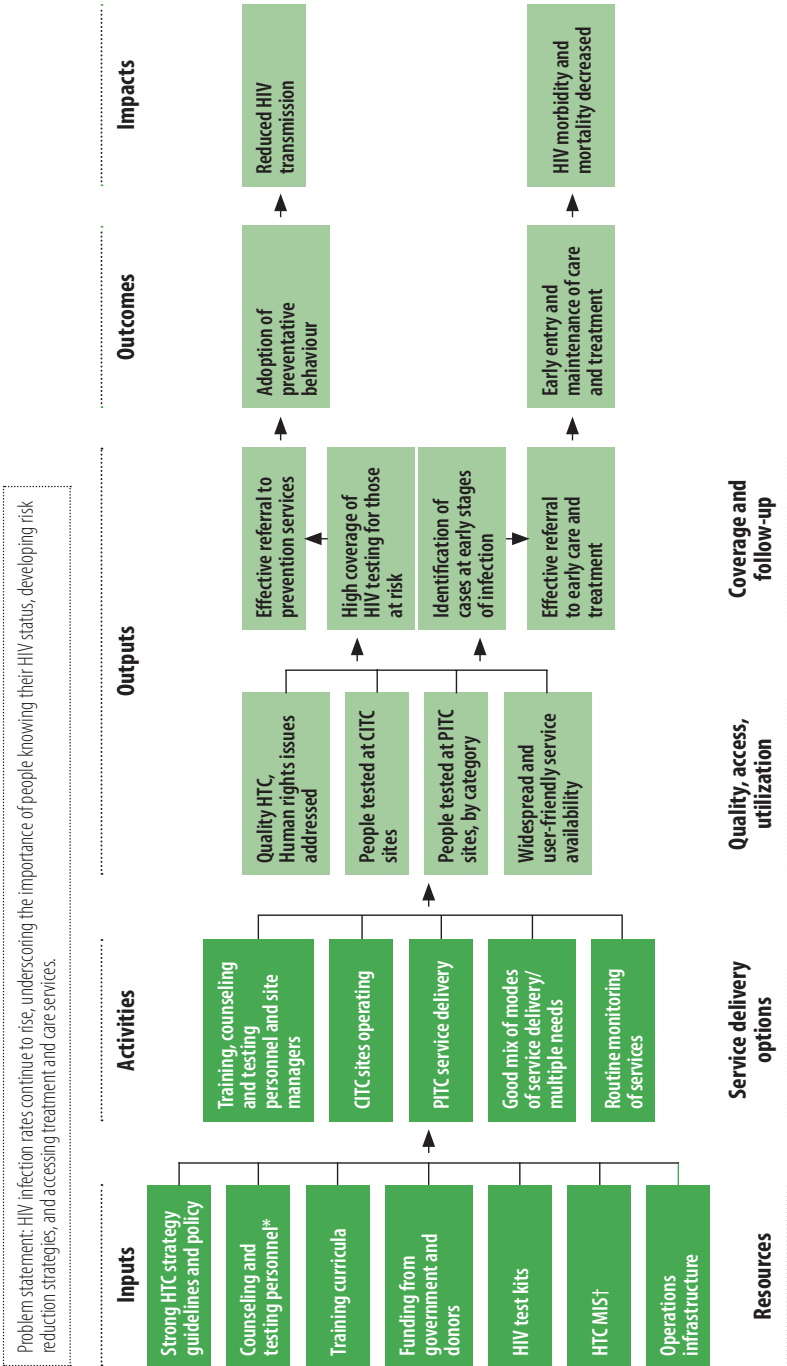


**FIGURE B.2**

**Example of Logic Model for Secular HIV Testing and Counseling Program**



\* Personnel include counselors, laboratory technicians, and VCT site managers.  
 † At the beginning of a programme, inputs such as HTC guidelines, protocols, management information systems (MIS), and referral systems will need to be developed and would be considered "activities" and "outputs". When these products and systems are in place, they become "inputs."

"Example of HTC Programme Logic Model," *Guide for Monitoring and Evaluating National HIV Testing and Counselling (HTC) Programmes*, field-test version (World Health Organization, 2011), 10, <https://www.ncbi.nlm.nih.gov/books/NBK310781/>.